



FieldCommander[®]

Installation Guide

Hardware Platform 9



FChwp9

Safety Information

The following are warnings or safety guidelines. A warning means danger. You are in a situation that could cause bodily injury. Before you work on any equipment, be aware of the hazards involved with electrical circuitry and be familiar with standard practices for preventing accidents.

Qualified Personnel Warning

Only trained and qualified personnel should install or replace the device.

Waarschuwing	Installatie en reparaties mogen uitsluitend door getraind en bevoegd personeel uitgevoerd worden.
Varoitus	Ainoastaan koulutettu ja pätevä henkilökunta saa asentaa tai vaihtaa tämän laitteen.
Avertissement	L'installation ou le remplacement de cet appareil doit être réalisé par du personnel qualifié et compétent.
Achtung	Gerät nur von geschultem, qualifiziertem Personal installieren oder auswechseln lassen.
Avvertenza	Solo personale addestrato e qualificato deve essere autorizzato ad installare o sostituire questo apparecchio.
Advarsel	Kun kvalifisert personell med riktig opplæring bør montere eller bytte ut dette utstyret.
Aviso	Este equipamento deverá ser instalado ou substituído apenas por pessoal devidamente treinado e qualificado.
iiAtención!	Estos equipos deben ser instalados y reemplazados exclusivamente por personal técnico adecuadamente preparado y capacitado.
Warning!	Denna utrustning ska endast installeras och bytas ut av utbildad och kvalificerad personal.

Installation Warning

Read the installation instructions before you connect the device to a power source.

Waarschuwing	Raadpleeg de installatie-aanwijzingen voordat u het systeem met de voeding verbindt.
Varoitus	Lue asennusohjeet ennen järjestelmän yhdistämistä virtalähteeseen.
Attention	Avant d'alimenter cet appareil, veuillez consulter le manuel d'installation.
Warnung	Lesen Sie die Installationsanweisungen, bevor Sie das System an die Stromquelle anschließen.
Avvertenza	Consultare le istruzioni di installazione prima di collegare il sistema all'alimentatore.
Advarsel	Les installasjonsinstruksjonene før systemet kobles til strømkilden.
Aviso	Leia as instruções de instalação antes de ligar o sistema à sua fonte de energia.
iiAtención!	Ver las instrucciones de instalación antes de conectar el sistema a la red de alimentación.
Warning!	Läs installationsanvisningarna innan du kopplar systemet till dess strömförsörjningsenhet.

Restricted Access Area Warning

The device is intended for installation in restricted access areas. A restricted access area is an area to which access can be gained only by service personnel through the use of a special tool, lock and key, or other means of security, and that is controlled by the authority responsible for the location.

Waarschuwing	Dit toestel is bedoeld voor installatie op plaatsen met beperkte toegang. Een plaats met beperkte toegang is een plaats waar toegang slechts door servicepersoneel verkregen kan worden door middel van een speciaal instrument, een slot en sleutel, of een ander veiligheidsmiddel, en welke beheerd wordt door de overheidsinstantie die verantwoordelijk is voor de locatie.
Varoitus	Tämä laite on tarkoitettu asennettavaksi paikkaan, johon pääsy on rajoitettua. Paikka, johon pääsy on rajoitettua, tarkoittaa paikkaa, johon vain huoltohenkilöstö pääsee jonkin erikoistyökalun, lukkoon sopivan avaimen tai jonkin muun turvalaitteen avulla ja joka on paikasta vastuussa olevien toimivaltaisten henkilöiden valvoma.
Attention	Cet appareil est à installer dans des zones d'accès réservées où seul le personnel de service peut y accéder soit en déverrouillant un cadenas soit en désactivant un autre moyen de sécurité. L'accès aux zones de sécurité est sous la responsabilité de l'établissement.
Warnung	Diese Einheit ist zur Installation in Bereichen mit beschränktem Zutritt vorgesehen. Ein Bereich mit beschränktem Zutritt ist ein Bereich, zu dem nur Wartungspersonal mit einem Spezialwerkzeug, Schloß und Schlüssel oder anderer Sicherheitsvorkehrungen Zugang hat, und der von dem für die Anlage zuständigen Gremium kontrolliert wird.
Avvertenza	Questa unità deve essere installata in un'area ad accesso limitato. Un'area ad accesso limitato è un'area accessibile solo a personale di assistenza tramite un'attrezzo speciale, lucchetto, o altri dispositivi di sicurezza, ed è controllata dall'autorità responsabile della zona.
Advarsel	Denne enheten er laget for installasjon i områder med begrenset adgang. Et område med begrenset adgang gir kun adgang til servicepersonale som bruker et spesielt verktøy, lås og nøkkel, eller en annen sikkerhetsanordning, og det kontrolleres av den autoriteten som er ansvarlig for området.
Aviso	Esta unidade foi concebida para instalação em áreas de acesso restrito. Uma área de acesso restrito é uma área à qual apenas tem acesso o pessoal de serviço autorizado, que possui uma ferramenta, chave e fechadura especial, ou qualquer outra forma de segurança. Esta área é controlada pela autoridade responsável pelo local.
Advertencia!	Esta unidad ha sido diseñada para instalarse en áreas de acceso restringido. Área de acceso restringido significa un área a la que solamente tiene acceso el personal de servicio mediante la utilización de una herramienta especial, cerradura con llave, o algún otro medio de seguridad, y que está bajo el control de la autoridad responsable del local.
Varning!	Denna enhet är avsedd för installation i områden med begränsat tillträde. Ett område med begränsat tillträde får endast tillträdas av servicepersonal med ett speciellt verktyg, lås och nyckel, eller annan säkerhetsanordning, och kontrolleras av den auktoritet som ansvarar för området.

Power Supply Disconnection Warning

Before working on the device or near power supplies, disconnect the power.

Waarschuwing	Voordat u aan een frame of in de nabijheid van voedingen werkt, dient u bij wisselstroom toestellen de stekker van het netsnoer uit het stopcontact te halen; voor gelijkstroom toestellen dient u de stroom uit te schakelen bij de stroomverbreker.
Varoitus	Kytke irti vaihtovirtalaitteiden virtajohto ja katkaise tasavirtalaitteiden virta suojakytkimellä, ennen kuin teet mitään asennuspohjalle tai työskentelet virtalähteiden läheisyydessä.
Attention	Avant de travailler sur cet appareil, veuillez couper les alimentations à courant alternatif et continu de celui-ci.
Warnung	Bevor Sie an einem Chassis oder in der Nähe von Netzgeräten arbeiten, ziehen Sie bei Wechselstromeinheiten das Netzkabel ab bzw. schalten Sie bei Gleichstromeinheiten den Strom am Unterbrecher ab.
Avvertenza	Prima di lavorare su un telaio o intorno ad alimentatori, scollegare il cavo di alimentazione sulle unità CA; scollegare l'alimentazione all'interruttore automatico sulle unità CC.
Advarsel	Før det utføres arbeid på kabinettet eller det arbeides i nærheten av strømforsyningsenheter, skal strømledningen trekkes ut p vekselstrømsenheter og strømmen kobles fra ved strømbryteren på likestrømsenheter.
Aviso	Antes de trabalhar num chassis, ou antes de trabalhar perto de unidades de fornecimento de energia, desligue o cabo de alimentação nas unidades de corrente alternada; desligue a corrente no disjuntor nas unidades de corrente contínua.
iiAdvertencia!	Antes de manipular el chasis de un equipo o trabajar cerca de una fuente de alimentación, desenchufar el cable de alimentación en los equipos de corriente alterna (CA); cortar la alimentación desde el interruptor automático en los equipos de corriente continua (CC).
Varning!	Innan du arbetar med ett chassi eller nära strömförsörjningsenheter skall du för växelströmsenheter dra ur nätsladden och för likströmsenheter bryta strømmen vid överspänningskyddet.

Table of Contents

Safety Information	3
Qualified Personnel Warning	3
Installation Warning..	3
Restricted Access Area Warning	4
About this manual.	9
Installation	11
System requirements..	11
Getting familiar.	11
Hardware installation.	15
Assigning an IP address.	18
Configure IP address with browser.	18
Force new IP address using ARP+PING.	21
Testing the Ethernet connection.	22
The ping test..	22
The brower test..	22
Serial interfaces	23
RS-232..	23
The RS-232c standard.	23
The connections.	23
The RS-232c pin-out.	24
RS-485..	24
The RS-485 standard..	24
The connections.	25
The RS-485 pin-out..	26
Pin Assignments	27
Technical Specifications	29
Physical Dimensions	31
Notice to the user	33
Regulatory.	33
Trademarks..	34
Copyrights.	34

About this manual

This document is intended for users of the FieldCommander product and explains the steps to install and setup the system in your environment.

This guide contains information to install and configure the unit in your networking environment, as well as a basic overview of the serial communication hardware and IP-addressing. It provides all knowledge needed to connect the device in a way that FieldCommander is accessible and ready for further use.

Organisation of the documentation

- Installation** *Installation Guide Hardware Platform 1*
Installation Guide Hardware Platform 2
- Bundles information related to the hardware, such as the installation of the device, IP networking, serial interface details and technical specifications.
- Employment** *User's Guide*
- Explains how FieldCommander is used in your application development, and documents all its features, including the configuration.
- Programming** *FCscript Programmer's Guide*
- Function reference of FieldCommander's scripting language, used to create control applications.
- FCphp Programmer's Guide*
- Function descriptions of the FieldCommander specific PHP interface, used to build dynamic user interfaces on top of the control application.
- Software options** *Modbus Software Option*
Galaxy Software Option
EIB/KNX Software Option
- The "plug in" modules (optionally available) have their own documentation to explain the features, installation, configuration and programming interfaces.
- References** *Javascript Reference Manual*
- Extensive documentation of the Javascript (ECMAScript) core language used by FieldCommander for application programming.
- PHP Language Manual*
- Complete documentation of the PHP language and functions.

Installation

This chapter explains the installation in detail and along the way it introduces you to some of the concepts important to understand the operation of your FieldCommander unit.

System requirements

The system is completely self providing as it features both the FieldCommander platform, software and user interface by way of an internet browser "kiosk" with touch screen.

You can access the device though the ethernet as well. For this, you need a valid TCP/IP network connection and a browser. To be complete, it requires:

- 10Mbit (10base-T) or 100Mbit (100base-T) network connection with RJ-45 socket
- operating system with TCP/IP protocol stack
- Internet browser

CER International releases FieldCommander firmware updates regularly with enhancements, changes and fixes. Updates may feature new functionality, so it is a good idea to occasionally check our website at <http://www.cer.com> for new firmware releases.

Getting familiar

The connectors and controls of FieldCommander are subject in this chapter so you can get familiar with it. The front is a full screen touch sensitive panel:



All controls and connectors are located on the bottom of the unit.

Serial ports

The 9-pin ports, labeled COM1 (RS-232), COM2 (RS-485), COM3 and COM4 (both RS-232) are used to connect FieldCommander to your serial equipment. The chapter called "Serial Interfaces" uncovers the details of serial communication and pin-out of the connectors.

Serial number

The label affixed near the power connector states the product type and serial number, the latter of which is identical to the MAC address of the unit.

Hardware installation

You communicate with FieldCommander through your Ethernet network. In this part of the chapter, you'll learn about the unit itself and how and where to connect it. There are no configurable parts inside. Everything is controlled and configured by the software.

Connecting power

FieldCommander requires power of a single 12VDC. The power consumption is rated at 12VDC/2A_{TYP} and 12VDC/3A_{MAX}. Connect the plug to FieldCommander before powering the power supply to the mains.

Warning! Always disconnect the power cord from the FieldCommander chassis when you are working on it. Do not connect while the power is on. A sudden rush of power can damage sensitive electronic components.

The following suggested power supply is available from CER International:

- desktop supply, 100/220VAC to 12VDC/5A (part no. FCPOWERHWP9)

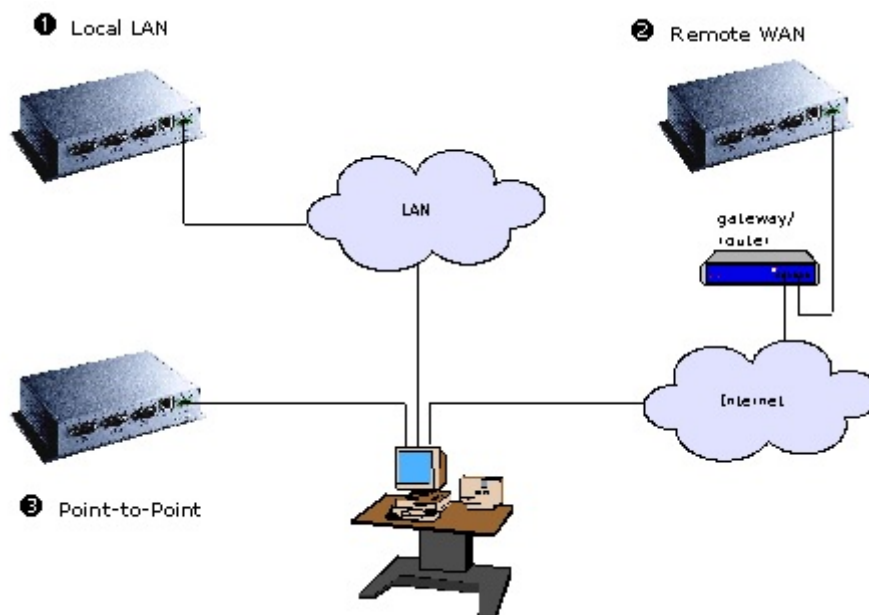
This power supply is CE and FCC certified.

Connecting to the network

Before connecting FieldCommander to your network, you might want to consult your network administrator. You can employ FieldCommander at various points in your ethernet network as shown below.

Make sure the IP addressing scheme of FieldCommander does not interfere with your existing network configuration. The chapter "IP configuration" takes the myths out of it.

Three ways to connect FieldCommander to Ethernet:



- ❶ **Local LAN:** FieldCommander can be part of your local Ethernet network by connecting it to your hub or switch using a straight cable, just like your own machine.
- ❷ **Remote WAN:** When you co-locate FieldCommander, you can connect to it through a public network like the Internet. In this case, FieldCommander is connected to the network through your Internet gateway/router with *Port Forwarding* support using the supplied straight cable. The gateway/router establishes the connection between your ISP and FieldCommander.
- ❸ **Point-to-Point:** You can connect FieldCommander to your machine directly using a crossed ethernet cable (not supplied). Use this setup where you don't have a Ethernet LAN available or when you don't want to use it for FieldCommander.

Decide where you want to connect FieldCommander first as it affects some of the steps in the installation, most importantly cabling requirements and IP configuration.

To connect FieldCommander to your 10/100base-T network, you can use any standard Category 5 (CAT5). A suitable cable is supplied. Attach one side to the RJ-45 socket marked "Ethernet" on the front panel of the unit and the other to your ethernet hub or switch.

Take note of the serial number of your FieldCommander for future reference during installation. You find the number on the label on the bottom of the unit.

IP configuration

FieldCommander uses the common TCP/IP protocols to provide the connection to the client machine over Ethernet. Like any server or device, it needs a 'unique' IP number to be addressed. This chapter shows the basic concepts necessary to install and operate FieldCommander, it does not intend to be a TCP/IP networking guide.

Addressing basics

Unique address

Every device attached to a TCP/IP network is identified by a unique IP address which is a 32-bit number. To make it easier to memorize such addresses, they are usually expressed as four 8-bit numbers between 0 and 255, separated by dots, e.g.: 192.168.4.1. There are restrictions on using 0 and 255 so avoid those in an address.

Although an IP address is a single value, it consists of two parts: the *network ID* and the *host ID* of your computer. The network ID identifies the systems located on the same physical network. The host ID identifies a workstation, server, router, or other TCP/IP device within the network.

Even if a network is not connected to the Internet, it has become custom to choose an address in a range reserved for private networks. That makes it possible to connect your private network to the Internet later without having to reconfigure. The following ranges are reserved for local use (taken from RFC 1597):

10.0.0.0 to 10.255.255.255
172.16.0.0 to 172.31.255.255
192.168.0.0 to 192.168.255.255

Classes and subnets

After receiving a network ID from your system administrator, you must pick a unique ID for FieldCommander. Three classes are defined to accommodate networks of varying sizes. The address class can be identified by the first octet of the address or network ID. The examples in the table below use w.x.y.z to designate the bytes of the IP address.

Class	w values	Network ID	Host ID	Subnet mask
A	1-126	w	x.y.z	255.0.0.0
B	128-191	w.x	y.z	255.255.0.0
C	192-223	w.x.y	z	255.255.255.0

Subnet masks are 32-bit values that allow the recipient of IP packets to distinguish the network ID portion from the host ID. Subnet masks are created by assigning 1's to network ID bits and 0's to host ID bits. The 32-bit value is then converted to dotted-decimal notation, as shown in the table. For example, when the IP address is 192.168.4.1 and the subnet mask is 255.255.0.0, the network ID is 192.168 and the host ID is 4.1.

To prevent addressing and routing problems, all computers on a logical network must use the same subnet mask and network ID.

Assigning an IP address

The factory default IP address of FieldCommander is: **10.0.0.1** with netmask **255.0.0.0**.

This address will suffice when you have a point-to-point connection with FieldCommander or when your local network ID is "10". In this case the host ID of FieldCommander already fits in the range from 10.0.0.0 to 10.255.255.255. In any other case you'll have to assign FieldCommander a new IP address.

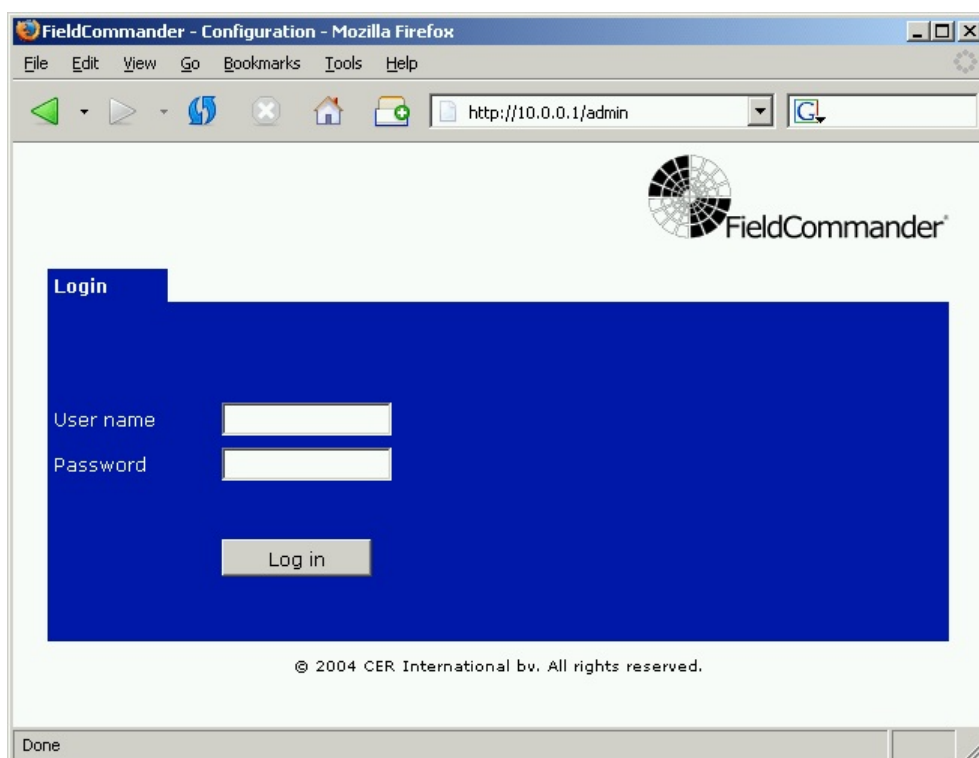
Configure IP address with browser

The normal way is to change the IP address, netmask and/or default gateway is from a web browser. For this to work, the computer with the browser must be on the same subnet. When this is not the case you can force FieldCommander to accept a new IP address by way of ARP and PING commands, see later this chapter.

To open the configuration pages of FieldCommander, start your web browser and enter FieldCommander's IP address in the location/address field:

```
http://10.0.0.1/admin/
```

The Login page should now appear:



When the above page does not appear, test the connection with PING (see next chapter).

In case you forgot the address of FieldCommander, you can force it to accept a new IP address by way of ARP and PING commands, see later this chapter.

Now you should identify yourself before you can access any of the actual configuration pages. Log in with the preconfigured "admin" account:

User name: admin
Password: admin

Note that both fields are case sensitive.

Note: For security reasons, it is strongly recommended to change this password. See the User's Guide for instructions.

After logging in, the "General" page shows the following information:



Status: indicates whether or not a script is running
Host name: network name of the unit
IP address: IP network address assigned to this unit (currently: 10.0.0.1)
Product model: the product type identification of the unit
Software version: currently installed firmware version
Serial number: unique serial identification also printed on the unit
Logged in as: name of the user currently logged in (currently: admin)

The configuration system is split into several tabs. The User's Guide explains the web user interface in detail, here we only discuss the system's IP settings

Click the "System" tab to go to the System page.

The "System IP" page shows the following information:

IP: Internet Protocol
 DHCP: Dynamic Host Configuration Protocol
 Bootp: Bootstrap Protocol
 ARP: Address Resolution Protocol

These fields control the IP settings of FieldCommander:

Enable ARP+PING

In situations where you don't have access to your FieldCommander unit or you have lost its address, ARP+PING provides a solution to change it from your workstation, see next chapter. When you uncheck the box, this feature is disabled which may lock you out of FieldCommander so do not uncheck this box unless you know what you are doing.

Manual IP settings

Fill out the new IP address, subnet mask and default gateway/router address here. Set the default gateway to 127.0.0.1 when you are not using a gateway or router or you don't know what it is. For details about the addressing, see chapter "IP configuration".

DHCP/bootp server

Instead of manually configuring the IP addresses, they can be assigned automatically using DHCP and bootp. Consult your network administrator if there is a DHCP or bootp server present. Don't use this setting unless you know exactly what you are doing.

Caution: Be aware that, when your FieldCommander is assigned a dynamic address, you may not know which address to enter in order to access it. Use this setting with care.

You have to restart the system in order for the new settings to take effect. Note that you have to point your browser to the new address and log in again when you've changed IP settings.

Force new IP address using ARP+PING

When FieldCommander is outside of your subnet or or you don't recall it's current address, you cannot open the configuration web pages to change the IP settings. To solve this, you can force FieldCommander to accept a new IP address by way of ARP and PING commands.

After you've forced the new address, you should use the web browser to make permanent changes to the IP configuration.

Windows 95/98/ME/NT/2000/XP

To force a new IP address into FieldCommander, start a command prompt and type the following commands:

```
arp -s <new IP address> <serial number>
ping <new IP address>
```

Example:

```
arp -s 192.168.4.1 00-d0-c9-48-29-77
ping 192.168.4.1
```

The response will be something similar to the following:

```
Request timed out.
Reply from 192.168.4.1: bytes=32 time=1ms TTL=128
Reply from 192.168.4.1: bytes=32 time<10ms TTL=128
Reply from 192.168.4.1: bytes=32 time<10ms TTL=128
```

The new address takes effect immediately and you can access FieldCommander with that IP address through your browser right away. You will now have to use the web browser to make permanent changes to the IP configuration.

Unix, Linux and OS/2

"arp" is part of the net-tools package in Unix and Linux so you might need to install this first.

To force a new IP address into FieldCommander, type the following commands:

```
arp -s <new IP address> <serial number> temp
ping <new IP address>
```

Example:

```
arp -s 192.168.4.1 00-d0-c9-48-29-77 temp
ping 192.168.4.1
```

You will see a response similar to this:

```
64 bytes from 192.168.4.1: icmp_seq=1 ttl=255 time=50 usec
64 bytes from 192.168.4.1: icmp_seq=2 ttl=255 time=53 usec
```

The new address takes effect immediately and you can access FieldCommander with that IP address through your browser right away. You will now have to use the web browser to make permanent changes to the IP configuration.

Testing the Ethernet connection

The ping test

The most basic way to test the network connection is to do a so-called 'ping' test. When the connection is working, FieldCommander will answer with an 'echo' or 'pong'.

Start a command prompt on your local machine and type the following command:

```
ping <IP address>
```

Example:

```
ping 10.0.0.1
```

The response will be something similar to the following:

```
Reply from 10.0.0.1: bytes=32 time=1ms TTL=128
Reply from 10.0.0.1: bytes=32 time=1ms TTL=128
...
```

This means the Ethernet connection is working and the IP settings are correct. You should be able to open the web page with your browser, see next text.

However, if PING displays something like:

```
Request timed out.
Request timed out.
...
```

It appears that your system did not receive a response back. Maybe the unit is configured to a different address, or you have a hardware problem. You can try to ping another machine to test if the cabling and network configuration is correct. When it fails, check the cabling and network setup.

In case you see a response like:

```
Destination host unreachable.
```

This indicates that the address you try to ping is outside of your subnet and you did not define a correct gateway/router address on the machine. Fix the IP settings of your machine and try pinging again. Note that you might have to restart your machine first.

The browser test

When the ping test has passed, start a web browser on your local machine and enter the current IP address of FieldCommander in the location/address field:

```
http://10.0.0.1/admin/
```

The Login page should now appear (see page 16). In case the page does not load, check the proxy settings of your browser. When FieldCommander is on the local network or connected directly with a cross cable, no proxy server should be used for its IP address.

Serial interfaces

In this part of the installation manual, you will learn some basics of serial communication, the hardware involved and how FieldCommander connects to your RS-232/485 devices.

RS-232

The RS-232c standard

The RS-232 standard (RS stands for *recommended standards*) was published first in 1969 by the EIA (Electronic Industries Association). It was originally drawn up to specify the connections between terminals and modems. It specifies the electrical characteristics of circuits between the devices and gives names and numbers to the wires.

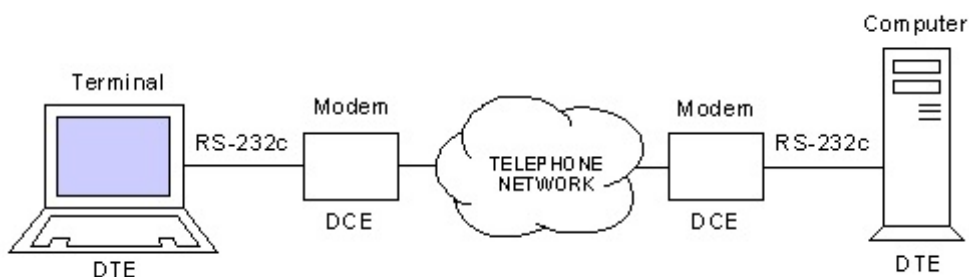
RS-232-C is the third - and most common - version of the standard so it is often simply referred to as RS-232 (without the 'c'). The combination of ITU-T's (formerly CCITT) V.24 and V.28 standards are equivalent to EIA-RS-232-C. In short: V.24+V.28 RS-232.

The characteristics of the RS-232c protocol are as follows:

- point-to-point communication (full duplex)
- maximum line length between sender and receiver 15 meters (50 feet).

The connections

In serial communication, you'll encounter many references to the rather cryptic terms DTE (Data Terminal Equipment) and DCE (Data Communication Equipment). The word terminal indicates the end of the line, as in bus terminal. In the phrase data terminal equipment it means the extreme ends of the data communications circuit. The data communications equipment, modems for example, provide the communication between the two DTEs.



The RS-232c pin-out

The 9-pin RS-232c connector is described in the EIA/TIA-574 standard.

Pin	Description
1	DCD
2	RxD
3	TxD
4	DTR
5	GND
6	DSR
7	RTS
8	CTS
9	RI

RS-485

The RS-485 standard

The RS-485 communication protocol is the industry's most widely used bidirectional, balanced transmission line standard. It is specifically designed for industrial multi-drop systems that should be able to transmit and receive data at high rates or over long distances.

RS-485 (RS stands for *recommended standards*) is accepted as a standard in 1983 by the EIA (Electronic Industries Association). The full name of the latest revision is TIA/EIA RS-485-A, published March 3, 1998 which is equivalent to the ISO 8482 standard.

The characteristics of the RS-485 protocol are as follows:

- bi-directional master-slave communication over a single twisted-pair (half-duplex)
- up to 32 nodes per segment
- maximum line length per segment of 1200 meters (4000 feet).

By using repeaters, multiple networks (segments) can be chained together to accommodate virtually an unlimited number of nodes.

As with the implementation of many standards, there is a difference between theory and practice. Though the RS-485 standard mentions a maximum of 32 nodes and a line length of 1200 meters, in practice it depends on the used transceivers, cable quality and network topology. For a deeper understanding of RS-485 in real-world applications, check the list of recommended literature at the end of this manual.

The connections

RS-485 is not difficult though some care has to be taken when adding FieldCommander as a new device on the bus. This chapter explains some of the basic terms and wiring strategy though it does not intend to go into too much detail.

To learn more about the practical use of RS-485 please refer to many excellent resources on this subject. Find a list of recommended literature at the end of this installation manual.

Masters and Slaves

RS-485 is used for multi-point communications: more devices may be connected to a single signal cable. Most RS-485 systems use the Master/Slave architecture, where each slave unit has its unique address and responds only to packets addressed to this unit. These packets are generated by the master (e.g. PC), which periodically polls all connected slave units. In Master/Slave systems, slaves never start the communications.

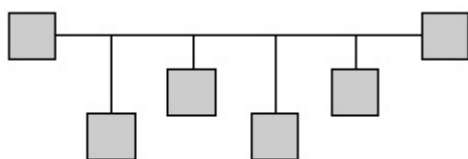
In Multi-Master systems, each node can initiate its own transmission creating the potential for data collisions. This type of system requires a more sophisticated method of error detection, including methods such as line contention detection, acknowledgment of transmission and a system for resending corrupted data. This is not specified in the RS-485 standard.

Network topology and wiring

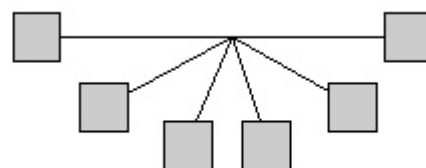
Multi-drop RS-485 implies that there are two main wires in a segment labeled DATA+ and DATA- or simple A and B. The wiring comes as a *twisted* pair. To reduce electrical noise, it should be twisted as tightly as possible. It is advisable to follow the standard colors used for the communication lines: Yellow for DATA+ (A), Green for DATA- (B).

For safe operation, a signal ground line should also be connected in the system. All connected devices tap from these two lines with so called drop cables. The connections are parallel so connecting or disconnecting of a node does not affect the network as a whole.

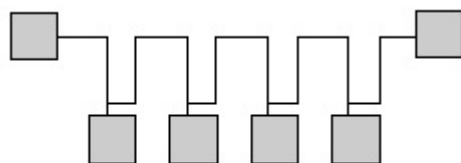
The network configuration isn't defined in the RS-485 specification. The designer can use a configuration that best fits the physical requirements of the system. In existing systems one should obey the rules of that network, of course.



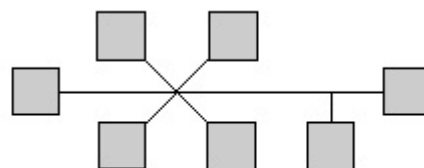
A: Backbone with stubs (workable)



C: Star network (avoid)



B: Daisy chain (best)



D: Mixed, backbone & star (avoid)

If the traffic on the network is slow and the cable lengths are short, topology is not an issue. But as soon as transmission speeds are higher or distances longer, you should be aware of the physical network layout. The daisy chain configuration is the best choice. The backbone and star networks are not impossible but it is hard to control reflections and harmful transmission-line effects.

Line termination

Termination resistors are used to match impedance of a node to the impedance of the transmission line being used. When impedances are mismatched, the transmitted signal is not completely absorbed by the load and a portion is reflected back into the transmission line. If the source, transmission line and load impedances are equal, these reflections are eliminated.

Commonly used RS-485 cabling, such as Category 5 (CAT5) cable, has an impedance of 100 Ohm. When cables run longer than about 10 meters, termination resistors of 100 Ohm should be installed at the both ends of the cable.

Automatic Data Flow Control Function for RS-485

FieldCommander automatically senses the direction of incoming data and switches its transmission direction accordingly. Therefore no handshaking signal (e.g. RTS signal) is necessary. This feature lets you simply and quickly build an RS-485 network with just two wires. More importantly, application software previously written for half duplex RS-232 environments can be maintained without need for modification.

The RS-485 pin-out

The table below shows the layout for the 9-pin RS-485 ports:

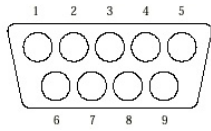
Pin	Description
1	DATA- (B) inverting
2	DATA+ (A) non-inverting
3	-
4	-
5	Signal ground (GND)
6	-
7	-
8	-
9	Power (PWR) +12Vdc

Caution!

Be sure to conform to the pin out of FieldCommander's RS-485 ports when making direct connections to this port. You may cause damage to your devices and/or FieldCommander when they use different cable layouts.

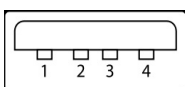
Pin Assignments

RS-232 and RS-485 Serial Ports



Pin	Port 1,3,4	Port 2
	RS-232	RS-485
1	DCD	DATA- (B) inverting
2	RxD	DATA+ (A) non-inverting
3	TxD	-
4	DTR	-
5	GND	GND
6	DSR	-
7	RTS	-
8	CTS	-
9	RI	POWER +12V

USB Ports



Pin	Signal
1	+5V DC
2	D-
3	D+
4	GND

Technical Specifications

Hardware

CPU	Intel Celeron M, 800MHz
Memory	256MB RAM
Storage	1024MB Flash ROM (200MB free for use)
Controls	Power on/off switch, Touch screen panel (resistive)
Display	15" TFT LCD, 1024 x 768
Indicators	Network LEDs
Mechanical	Aluminum front and steel casing
Mounting options	Flush mount, wall/panel mount
Power supply voltage	12V DC on power adapter plug
Power consumption	4A max at 12V DC
Power requirement	3A typical at 12V DC
Dimensions (WxDxH)	38.6 x 10.2 x 27.5 cm (15.2 x 4.0 x 10.8 inch)
Weight	10.6 kg (23.3 lb.)
Operating temperature	0 ~ 40°C (32 ~ 104°F)
Storage temperature	-20 ~ 60°C (-4 ~ 140°F)
Relative humidity	10 ~ 90% at 40°C, non-condensing
IP protection	IP53 water resistant front panel

RS-232 Interface

Interface	three RS-232 serial ports (EIA/TIA-232-C)
Connector	D-sub 9 pins (EIA/TIA-574)
Distance	15.2 meter max (50 feet)
Data bits	5, 6, 7 or 8
Stop bits	1, 1½ or 2
Parity	Even, Odd, Mark, Space, None
Flow control	XON/XOFF, CTS/RTS, DTR/DSR, None
Signals	TxD, RxD, RTS, CTS, DSR, DTR, CD, RI, GND

RS-485 Interface

Interface	one RS-485 serial port (EIA/TIA-485-A, ISO 8482)
Connector	D-sub 9 pins
Distance	1220 meter max (4000 feet)
Data bits	5, 6, 7 or 8
Stop bits	1, 1½ or 2
Parity	Even, Odd, Mark, Space, None
Flow control	Automatic
Signals	DATA+ (A), DATA- (B), GND, POWER (+12V)

Network Interface

Interface	10/100Base-T ethernet, auto detect (IEEE 802.3)
Connector	RJ-45
Indicators	Link and status LEDs

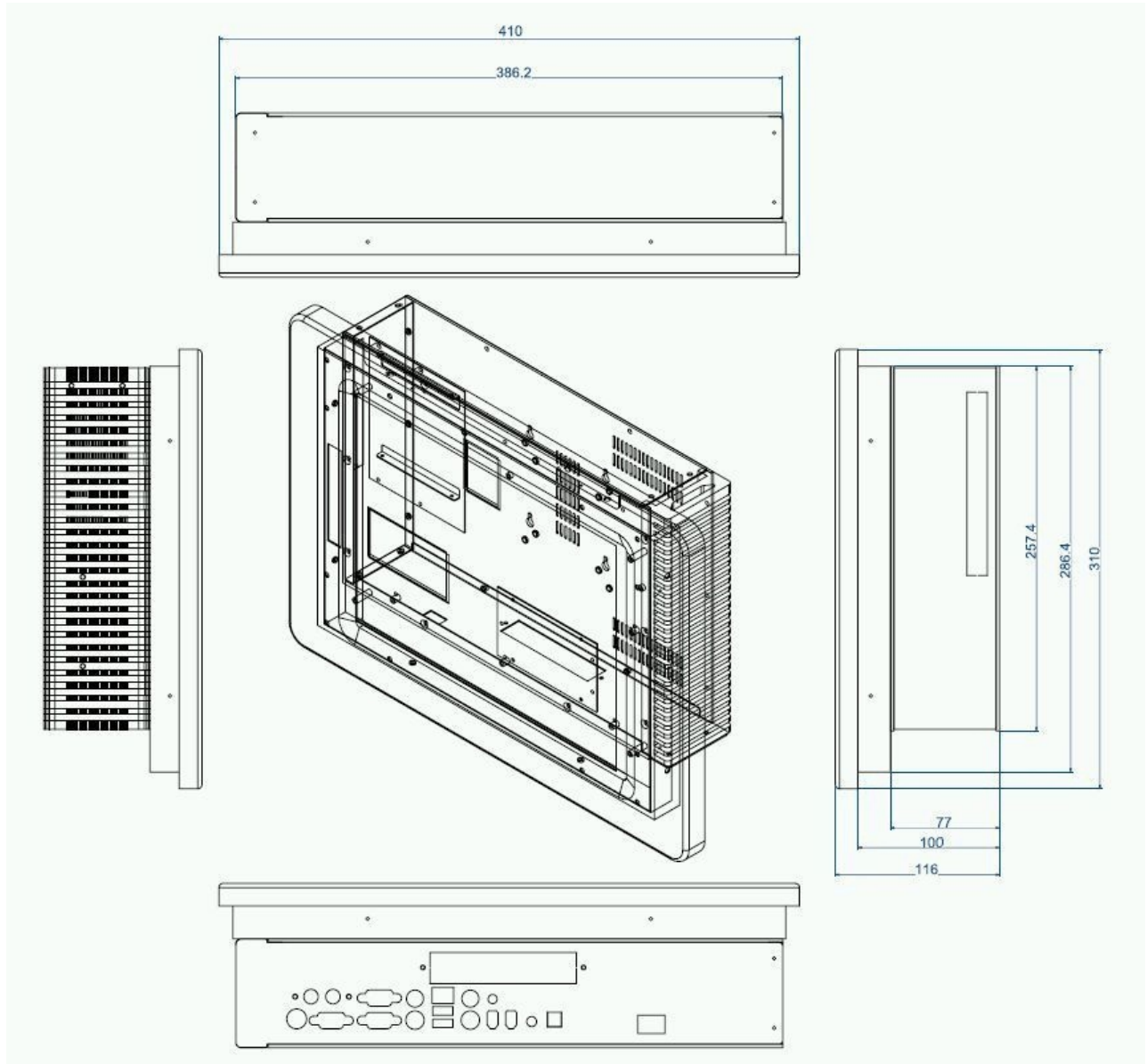
USB Interface

Interface	two USB serial ports, Rev 2.0 compliant
Connector	USB type A

Audio Interface

Interface	Line-Out
Connector	Mini jack (2.5mm) stereo
Interface	Microphone In
Connector	Mini jack (2.5mm)

Physical Dimensions



All sizes in centimeters

Notice to the user

Regulatory

FCC Notice



This device complies with Part 15 of the FCC Rules. Operation is subject to the following two conditions: (1) This device may not cause harmful interference, and (2) this device must accept any interference received, including interference that may cause undesired operation.

NOTE: This equipment has been tested and found to comply with the limits for a Class A digital device, pursuant to Part 15 of the FCC Rules. These limits are designed to provide reasonable protection against harmful interference when the equipment is operated in a commercial environment. This equipment generates, uses, and can radiate radio frequency energy and, if not installed and used accordance with the instruction manual, may cause harmful interference to radio communications. Operation of this equipment in a residential area is likely to cause harmful interference in which case the user will be required to correct the interference at his own expense.

WARNING: Properly shielded and grounded cables and connectors must be used in order to meet FCC emission limits. Neither the provider nor the manufacturer are responsible for any radio or television interference caused by using other than recommended cables and connectors or by unauthorized changes or modifications to this equipment. Changes or modifications made to this device which are not expressly approved by the party responsible for compliance could void the user's authority to operate the equipment.

CE Notice



This product has been tested and found to comply with the limits for Class A Information Technology Equipment according to CISPR 22/European Standard EN 55022. The limits for Class A equipment were derived for commercial and industrial environments to provide reasonable protection against interference with licensed communication equipment.

Attention: This is a Class A product. In a domestic environment this product may cause radio interference in which case the user may be required to take adequate measures.

Industry Canada Notice

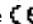

This Class A digital apparatus complies with Canadian ICES-003.

This digital apparatus does not exceed the Class A limits for radio noise emissions from digital apparatus set out in the Radio Interference Regulations of the Canadian Department of Communications.

Cet appareil numérique de la classe A est conforme à la norme NMB-003 du Canada.

Le présent appareil numérique n'émet pas de bruits radioélectriques dépassant les limites applicables aux appareils numériques de la classe A prescrites dans le Règlement sur le brouillage radioélectrique édicté par le ministère des Communications du Canada.

Declaration of Conformity

Declaration of Conformity	
according to ISO Guide 22 and EN 45014	
Manufacturer's name:	CER International bv
Manufacturer's address:	Postbus 258 4700 AG Roosendaal The Netherlands
declares that the product:	
Product Name:	FieldCommander
Model Number:	FC4215
Product Options:	all
conforms to the following Product Specifications:	
EMC Directive:	89/336/EEC for CE Marking
EN 55022: 1998 + A1: 2000 (Class A)	
EN 61000-3-2: 2000	
EN 61000-3-3: 1995 + A1: 2001	
EN 55024: 1998 (IEC 61000-4-2:1995+A1:1998+A2:2000, IEC 61000-4-3:1995+A1:1998+A2:2000, IEC 61000-4-4:1995+A1:2000, IEC 61000-4-5:1995+A1:2000, IEC 61000-4-6:1996+A1:2000, IEC 61000-4-8:1993+A1:2000, IEC 61000-4-11:1994+A1:2000)	
Supplemental Information: The product herewith complies with the requirements of the EMC Directive 89/336/EEC and carries the  -marking accordingly.	
	
A. van den Broek General Manager	
Date: 1 March 2007, Roosendaal, The Netherlands	

Trademarks

CER and FieldCommander are registered trademarks of CER International bv.

All other product names and services identified throughout this book are trademarks or registered trademarks of their respective companies. They are used throughout this manual in editorial fashion only and for the benefit of such companies. No such uses, or the use of any trade name, is intended to convey endorsement or other affiliation with this manual.

Copyrights

Copyright © 2007 CER International bv. All rights reserved.

No part of this publication may be reproduced in any form, or stored in a database or retrieval system, or transmitted or distributed in any form by any means, electronic, mechanical photocopying, recording, or otherwise, without the prior written permission of CER International bv, except as permitted by the Copyright Act of 1976 and except that program listings may be entered, stored and executed in a computer system.

THE INFORMATION AND MATERIAL CONTAINED IN THIS MANUAL ARE PROVIDED "AS IS," WITHOUT WARRANTY OF ANY KIND, EXPRESS OR IMPLIED, INCLUDING WITHOUT LIMITATION ANY WARRANTY CONCERNING THE ACCURACY, ADEQUACY, OR COMPLETENESS OF SUCH INFORMATION OR MATERIAL OR THE RESULT TO BE OBTAINED FROM USING SUCH INFORMATION OR MATERIAL, NEITHER CER INTERNATIONAL BV NOR THE AUTHORS SHALL BE RESPONSIBLE FOR ANY CLAIMS ATTRIBUTABLE TO ERRORS, OMISSIONS, OR OTHER INACCURACIES IN THE INFORMATION OR MATERIAL CONTAINED IN THIS MANUAL, AND IN NO EVENT SHALL CER INTERNATIONAL BV OR THE AUTHORS BE LIABLE FOR DIRECT, INDIRECT, SPECIAL, INCIDENTAL, OR CONSEQUENTIAL DAMAGES ARISING OUT OF THE USE OF SUCH INFORMATION OR MATERIAL.

The latest documentation is available
from <http://www.cer.com>

FieldCommander is a product of:

CER International bv
Postbus 258
NL 4700 AG Roosendaal
The Netherlands
TEL: +31 (0)165 557417
FAX: +31 (0)165 562151
<http://www.cer.com>

from Device to Enterprise

CER[®]

Part no. FCHWP9IG, revision 3.5